

ONALASKA Alliance

ALL REINFORCED CONCRETE SHALL BE CAST IN PLACE OR PRECAST AND CAST IN PLACE SHALL BE CAST IN PLACE. ALL REINFORCED CONCRETE SHALL BE CAST IN PLACE.

REINFORCED CONCRETE SHALL BE CAST IN PLACE OR PRECAST AND CAST IN PLACE SHALL BE CAST IN PLACE. ALL REINFORCED CONCRETE SHALL BE CAST IN PLACE.

MANHOLE RINGS AND COVERS SHALL BE IN ACCORDANCE WITH STANDARD SPECIFICATIONS AND MEET THE STRENGTH REQUIREMENTS OF FEDERAL SPECIFICATION...

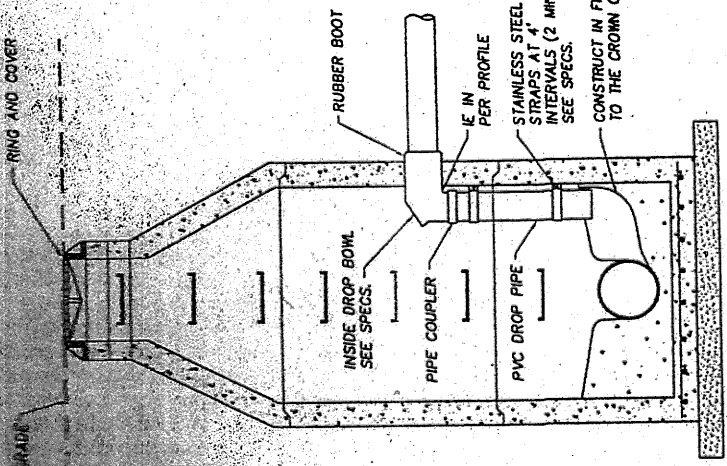
ALL BASE REINFORCING STEEL SHALL HAVE A MINIMUM YIELD STRENGTH OF 60,000 PSI AND BE PLACED IN THE UPPER HALF OF THE BASE WITH 1" MINIMUM CLEARANCE.

FOR DETAILS SHOWING LADDER, STEPS, HANDHOLDS AND TOP SLABS. SEE STANDARD PLAN "MISCELLANEOUS MANHOLE DETAILS".

SEE THE STANDARD SPECIFICATIONS FOR JOINT REQUIREMENTS. ALL PIPE CONNECTION TO MANHOLE SHALL BE MADE WITH "KOR-N-SEAL" FLEXIBLE CONNECTORS...

MANHOLES UNDER 8' IN HEIGHT SHALL USE FLAT TOP SLAB IN PLACE OF PRECAST CONE.

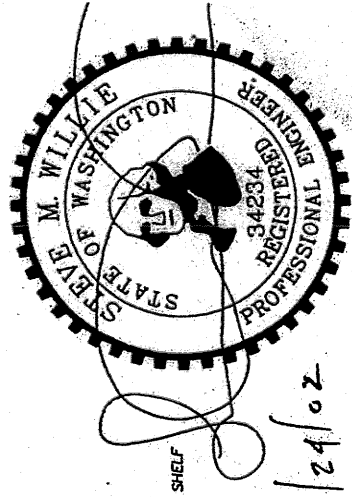
INTERNAL CLEANOUT DETAIL FOR SEWER MAINS



INSIDE DROP MANHOLE CONNECTION

N.T.S.

- RING AND COVER
ADJUNCTION SECTION (SEE LADDER BRIGGS OR CHASE RINGS OPTIONAL)
PRECAST CONE (ECCENTRIC UNLESS OTHERWISE SPECIFIED)
STEPS
PRECAST RISER SECTIONS
LADDER
SLOPE = 1/2" FT (TYP)
CONSTRUCT IN FIELD, CHANNEL AND SHELF TO THE CROWN OF THE PIPE
REINFORCING STEEL (FOR PRECAST BASE WITH INTEGRAL RISER)
PRECAST BASE WITH INTEGRAL RISER
BANK RUN GRAVEL FOR TRUCK BACKFILL SEE SPECIFICATIONS



4/24/02

EXPIRES: 7/1/98

ONALASKA SEWER COLLECTION SYSTEM DETAILS

LEWIS COUNTY WATER DISTRICT NO.

99128-Details SHT 26 OF

Table with design and check dates: DESIGNED BY DATE 4/23/02, CHECKED BY DATE 4/24/02.

Approved By